

MONITORING WELLS

MONITORING WELLS - FIELD F

	TOP 4" OUTER CASING	TOP 2" INNER CASING	GROUND	STICK UP	NORTH (METERS)	EAST (METERS)
MW-1F TAG #258634	ELEV: 33.98'	ELEV: 33.53'	ELEV: 31.57'	2.41'	89056.08	206855.40
MW-2F TAG #258632	ELEV: 33.93'	ELEV: 33.46'	ELEV: 31.53'	2.40'	89805.84	206844.26
MW-3F TAG #258633	ELEV: 29.03'	ELEV: 28.41'	ELEV: 26.43'	2.60'	89653.61	207373.30
MW-4F TAG #258635	ELEV: 20.98'	ELEV: 20.53'	ELEV: 18.48'	2.50'	88664.02	207398.01
MW-5F TAG #258636	ELEV: 29.55'	ELEV: 29.05'	ELEV: 27.06'	2.49'	88901.57	207213.08

NOTE:
ALL COORDINATES ARE IN DELAWARE STATE PLANE, NAD83, METERS.
ALL MONITORING WELLS HAVE BEEN CASED TO A DEPTH OF 20-FEET.
ALL MONITORING WELLS HAVE BEEN SCREENED FROM A DEPTH OF 20-FEET TO 30-FEET.

F FIELD LYSIMETER LOCATIONS

	NORTH (METERS)	EAST (METERS)	GROUND ELEV.	TOP 6" OUTER CASING	TOP 2" INNER CASING
LY-1F TAG #265827	89388.92	207110.93	33.13'	35.73'	35.23'

F FIELD PIEZOMETER LOCATIONS

	NORTH (METERS)	EAST (METERS)	GROUND ELEV.	TOP 6" OUTER	TOP 2" INNER
PZ-1F TAG #265831	88751.53	207166.42	22.53'	25.53'	25.41'

MONITORING WELLS

MONITORING WELLS - SRRF/FIELD L

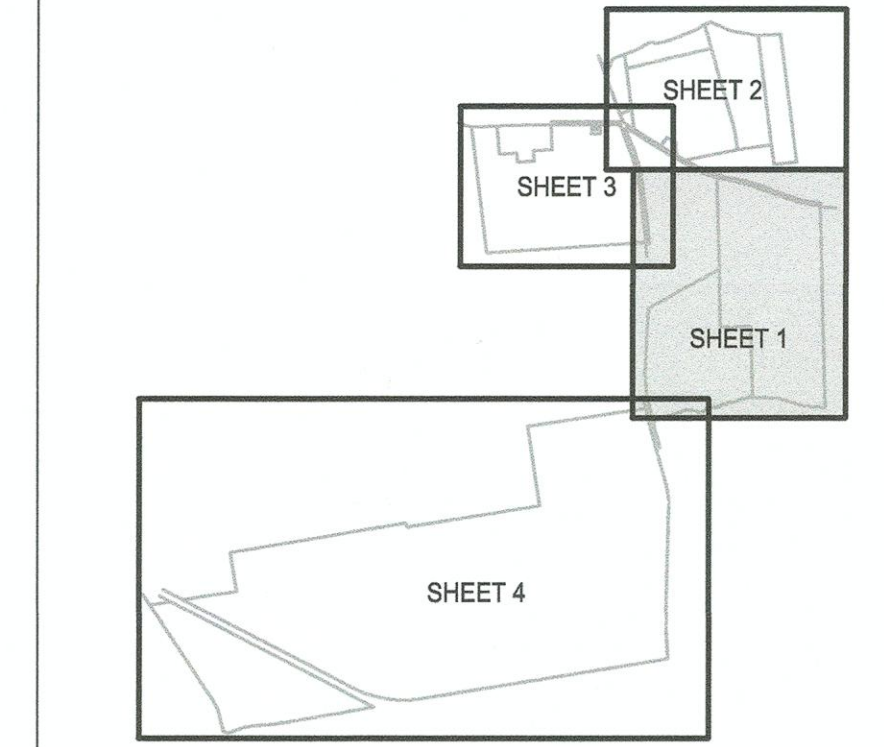
	TOP 4" OUTER CASING	TOP 2" INNER CASING	GROUND	STICK UP	NORTH (METERS)	EAST (METERS)
MW-1L TAG #254881	ELEV: 36.67'	ELEV: 36.25'	ELEV: 34.11'	2.56'	88993.83	206492.46
MW-2L TAG #254882	ELEV: 35.67'	ELEV: 35.45'	ELEV: 33.21'	2.46'	89332.77	206846.20
MW-3L TAG #254883	ELEV: 30.69'	ELEV: 30.41'	ELEV: 28.50'	2.19'	89038.74	207010.94
MW-4L TAG #254884	ELEV: 24.95'	ELEV: 24.70'	ELEV: 21.83'	3.12'	88740.91	207018.88

NOTE:
ALL COORDINATES ARE IN DELAWARE STATE PLANE, NAD83, METERS.
ALL MONITORING WELLS HAVE BEEN CASED TO A DEPTH OF 20-FEET.
ALL MONITORING WELLS HAVE BEEN SCREENED FROM A DEPTH OF 20-FEET TO 30-FEET.

SURFACE WATER SAMPLE LOCATIONS

	NORTH (METERS)	EAST (METERS)
SW-2	88557.43	206493.46
SW-3	88638.01	207393.63

INDEX MAP



LEGEND

- PROPERTY LINE
- - - ADJACENT PROPERTY LINE
- BENCH MARK
- CONCRETE MONUMENT FOUND
- CAPPED REBAR FOUND
- IRON PIPE FOUND
- - - BUILDING SETBACK LINE
- - - PAVEMENT SETBACK LINE
- - - EASEMENT LINE
- - - 100 YEAR FLOODPLAIN
- - - FLOOD HAZARD AREA
- - - WETLANDS
- - - EDGE OF WATER
- - - CENTERLINE OF DITCH
- - - CONTOUR ELEVATION
- - - SPOT ELEVATION
- BUILDINGS
- - - FENCES
- SIGNS
- - - CATV CABLE TELEVISION LINE
- - - FO FIBER OPTIC LINE
- - - T TELEPHONE LINE
- - - G NATURAL GAS LINE
- - - OE OVERHEAD ELECTRIC LINE
- ELECTRIC POLE
- - - UE UNDERGROUND ELECTRIC LINE
- - - SAW SANITARY SEWER LINE
- SANITARY SEWER MANHOLE
- - - EX. SANITARY SEWER FORCE MAIN
- - - WM WATER MAIN
- WATER VALVE
- FIRE HYDRANT
- WATER MANHOLE
- WATER WELL
- MONITORING WELL
- - - PR. BUILDING SETBACK LINE
- - - PR. CONTOUR ELEVATION
- - - PR. BUILDINGS
- - - PR. FENCES
- PR. SANITARY SEWER MANHOLE
- - - FM FUTURE SANITARY SEWER FORCE MAIN
- - - DB DWELLING BUFFER LINE
- - - WWB WATER WELL BUFFER LINE
- - - WB WETLAND BUFFER LINE
- - - WCB WATER COURSE BUFFER



664 Churchmans Road
Newark, Delaware 19702
P.O. Box 15004, Wilmington, Delaware 19850
Phone: (302) 453-6900 Fax: (302) 453-5800

REVISIONS:	DESCRIPTION	BY	DATE



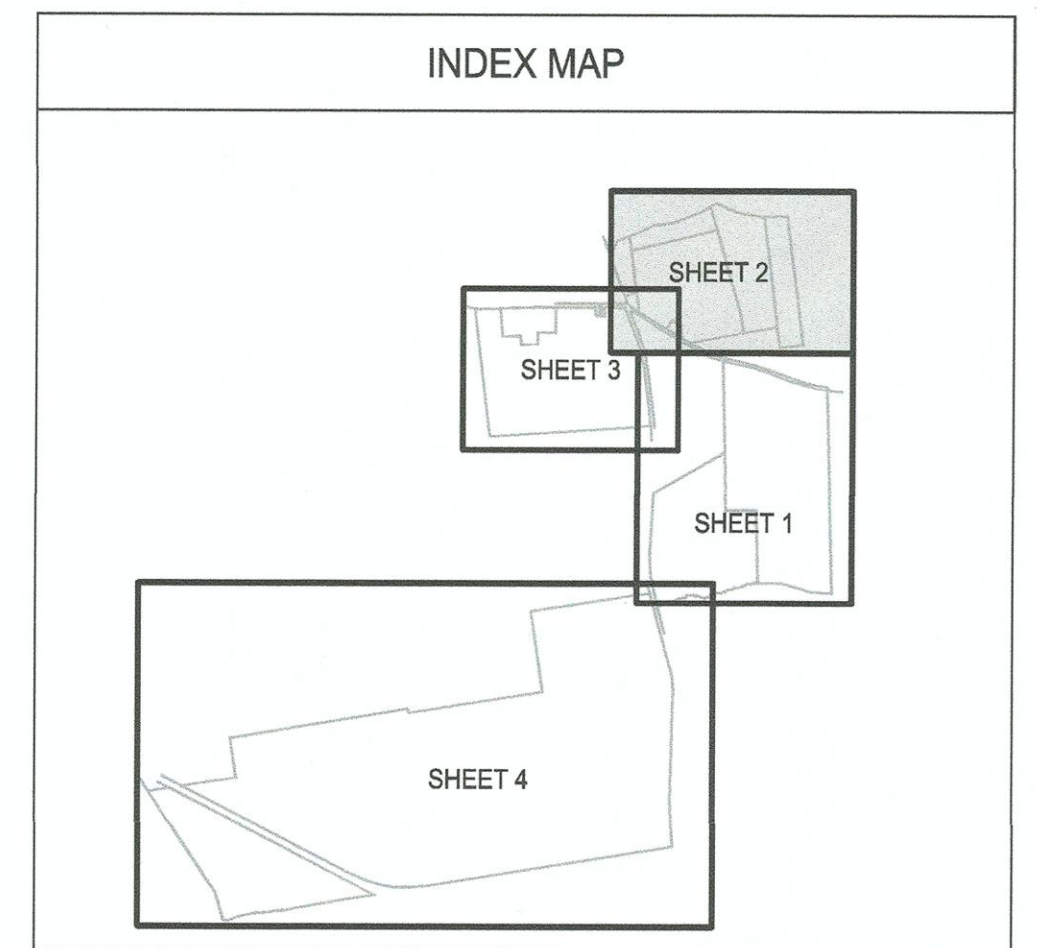
Date: 6/14/19	Checked By: DK	Sheet 1 of 4
Scale: 1"=300'	Page & Grid:	Hundred: BROADKILL
Drawn By: KEG	CAD File: SRRF ASBUILTS.dwg	Budget No. 3003456

SAMPLE LOCATIONS AND BUFFER ZONES
SUSSEX REGIONAL RECHARGE FACILITY & SPRAY FIELD F

SUSSEX COUNTY STATE OF DELAWARE



G:\ENG_PROJECTS\DS.701 ANSKWRF WASTEWATER\DS.701.06 ANSKWRF 2017 CONSTRUCTION PERMIT Drawings\CIVIL\3D SHEETS\ASBUILTS\SRRF ASBUILTS.dwg, Layout1, 6/14/2019 12:24:43 PM



MONITORING WELLS
MONITORING WELLS - FIELD D

	TOP 4" OUTER CASING	TOP 2" INNER CASING	GROUND	STICK UP	NORTH (METERS)	EAST (METERS)
MW-1D	ELEV: 33.82'	ELEV: 33.11'	ELEV: 31.12'	2.70'	90060.87	206418.24
TAG #258642						
MW-2D	TOP 4" OUTER CASING	TOP 2" INNER CASING	GROUND	STICK UP	90482.14	206807.82
TAG #XXXXXXX	ELEV: 22.41'	ELEV: 22.22'	ELEV: 19.56'	2.85'		
MW-3D	TOP 4" OUTER CASING	TOP 2" INNER CASING	GROUND	STICK UP	90120.82	207104.73
TAG #258645	ELEV: 27.73'	ELEV: 27.20'	ELEV: 25.28'	2.45'		
MW-4D	TOP 4" OUTER CASING	TOP 2" INNER CASING	GROUND	STICK UP	90198.79	206648.62
TAG #258643	ELEV: 26.00'	ELEV: 25.65'	ELEV: 23.73'	22.27'		

NOTE:
ALL COORDINATES ARE IN DELAWARE STATE PLANE, NAD83, METERS.
ALL MONITORING WELLS HAVE BEEN CASED TO A DEPTH OF 20-FEET.
ALL MONITORING WELLS HAVE BEEN SCREENED FROM A DEPTH OF 20-FEET TO 30-FEET.
MW-2D IS STILL PENDING A DNREC TAG ID.

PROPOSED LYSIMETER
LYSIMETER WELLS - FIELD D

	NORTH (METERS)	EAST (METERS)
LY-1D	90202.98	206753.94

NOTE:
LOCATIONS SHOWN FOR LYSIMETERS (LY) ARE PROPOSED TO BE PLACED PRIOR TO OPERATION ON FIELD D COMMENCING.

PROPOSED PIEZOMETER
PIEZOMETER WELLS - FIELD D

	NORTH (METERS)	EAST (METERS)
PZ-1D	90411.76	206499.98
PZ-2D	90421.83	207092.89

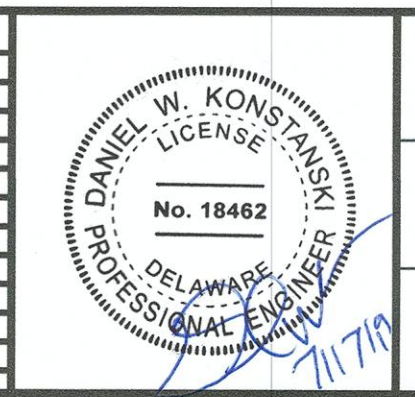
NOTE:
LOCATIONS SHOWN FOR PIEZOMETERS (PZ) ARE PROPOSED TO BE PLACED PRIOR TO OPERATION ON FIELD D COMMENCING.

SURFACE WATER SAMPLE LOCATIONS

	NORTH (METERS)	EAST (METERS)
SW-5	90372.08	206230.09
SW-6	90363.9	207758.4

664 Churchmans Road
Newark, Delaware 19702
P.O. Box 15004, Wilmington, Delaware 19850
Phone: (302) 453-6900 Fax: (302) 453-5800

REVISIONS:	DESCRIPTION	BY	DATE

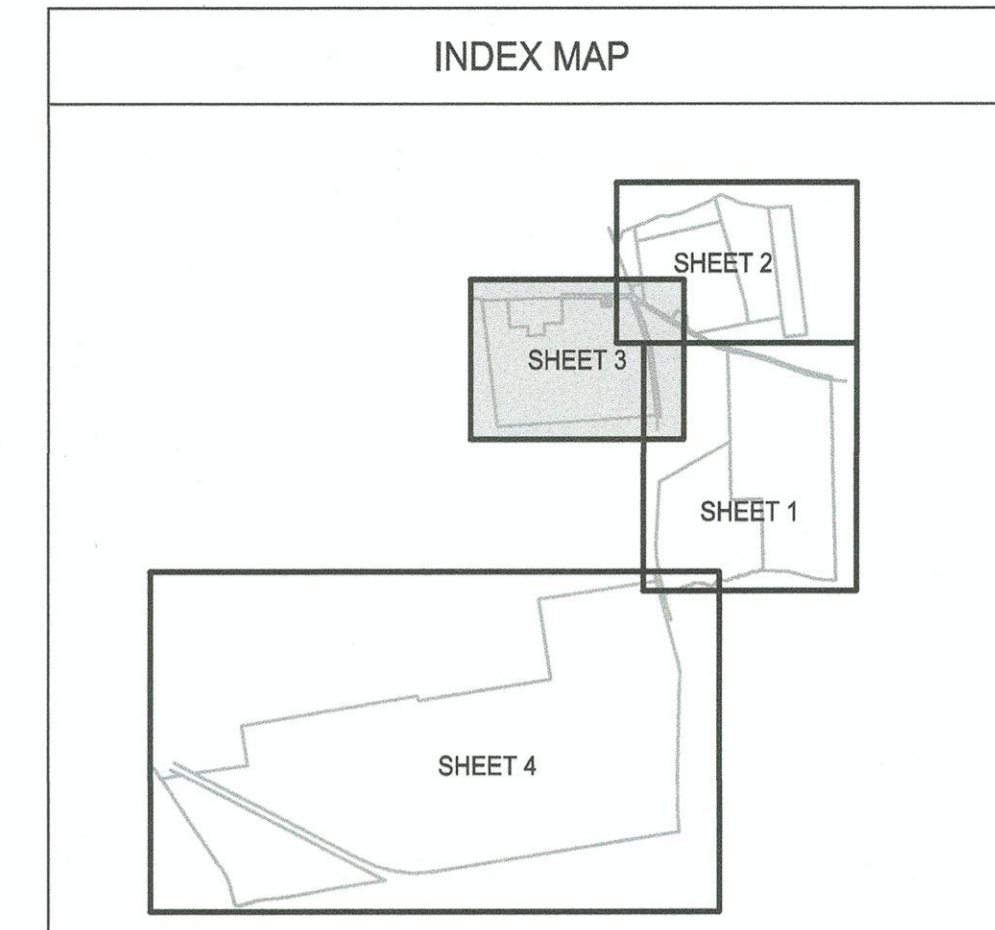
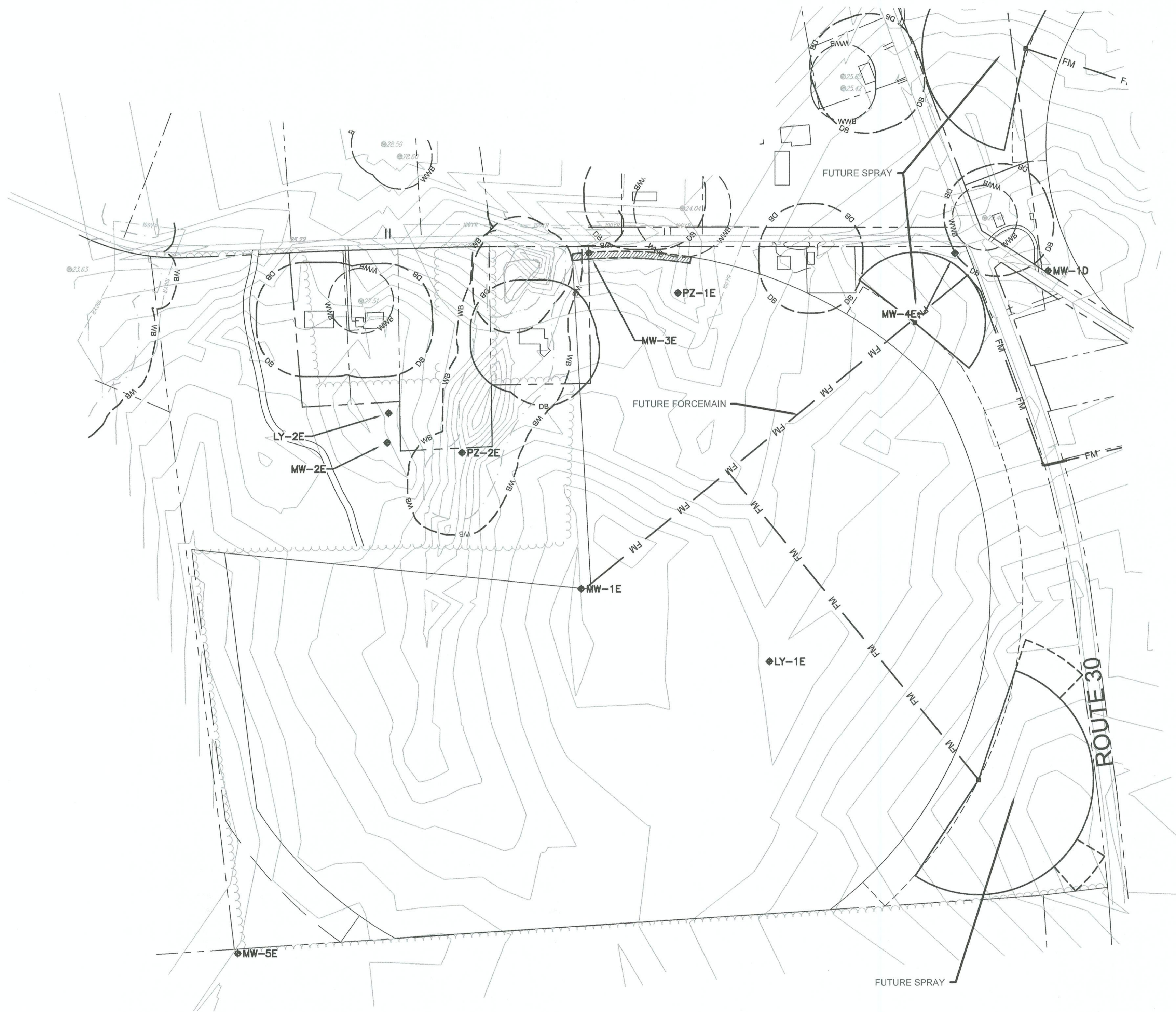


Date: 7/11/19	Checked By: DK	Sheet 2 of 4
Scale: 1"=250'	Page & Grid:	Hundred: BROADKILL
Drawn By: KEG	CAD File: SRRF ASBUILTS.dwg	Budget No. 3003456

SAMPLE LOCATIONS AND BUFFER ZONES
SPRAY FIELD D

SUSSEX COUNTY STATE OF DELAWARE

◆SW-4



MONITORING WELLS
MONITORING WELLS - FIELD E

	TOP 4" OUTER CASING	TOP 2" INNER CASING	GROUND	STICK UP	NORTH (METERS)	EAST (METERS)
MW-1E	ELEV: 35.00'	ELEV: 34.62'	ELEV: 32.54'	2.46'	89421.11	205657.01
TAG #258637						
MW-2E	ELEV: 34.45'	ELEV: 33.97'	ELEV: 31.74'	2.71'	89900.00	205797.44
TAG #258638						
MW-3E	ELEV: 25.45'	ELEV: 24.97'	ELEV: 22.79'	2.66'	90077.75	205986.56
TAG #258639						
MW-4E	ELEV: 34.35'	ELEV: 33.69'	ELEV: 31.67'	2.68'	90077.30	206330.72
TAG #258640						
MW-5E	ELEV: 34.54'	ELEV: 34.20'	ELEV: 31.83'	2.71'	89762.90	205979.61
TAG #258641						

NOTE:
ALL COORDINATES ARE IN DELAWARE STATE PLANE, NAD83, METERS.
ALL MONITORING WELLS HAVE BEEN CASED TO A DEPTH OF 20-FEET.
ALL MONITORING WELLS HAVE BEEN SCREENED FROM A DEPTH OF 20-FEET TO 30-FEET.

PROPOSED LYSIMETER
LYSIMETER WELLS - FIELD E

	NORTH (METERS)	EAST (METERS)
LY-1E	89694.85	206156.54
LY-2E	89927.50	205798.69

NOTE:
LOCATIONS SHOWN FOR LYSIMETERS (LY) ARE PROPOSED TO BE PLACED PRIOR TO OPERATION ON FIELD E COMMENCING.

PROPOSED PIEZOMETER
PIEZOMETER WELLS - FIELD E

	NORTH (METERS)	EAST (METERS)
PZ-1E	90040.15	206070.22
PZ-2E	89890.51	205867.75

NOTE:
LOCATIONS SHOWN FOR PIEZOMETERS (PZ) ARE PROPOSED TO BE PLACED PRIOR TO OPERATION ON FIELD E COMMENCING.

SURFACE WATER SAMPLE LOCATIONS

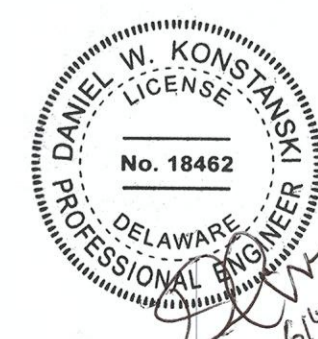
	NORTH (METERS)	EAST (METERS)
SW-4	90245.11	205198.77



664 Churchmans Road
Newark, Delaware 19702
P.O. Box 15004, Wilmington, Delaware 19850
Phone: (302) 453-6900 Fax: (302) 453-5800

REVISIONS:

DESCRIPTION	BY	DATE

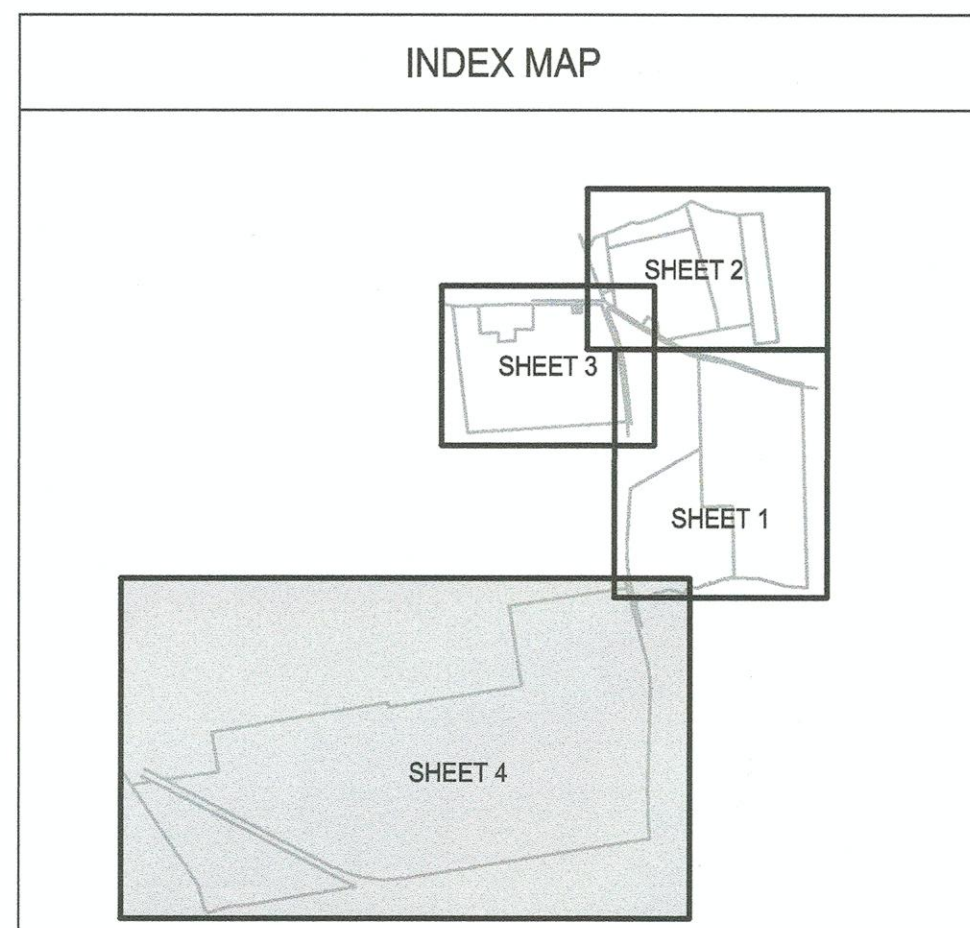


Date: 6/14/19	Checked By: DK	Sheet 3 of 4
Scale: 1"=200'	Page & Grid:	Hundred: BROADKILL
Drawn By: KEG	CAD File: SRRF ASBUILTS.dwg	Budget No. 3003456

SAMPLE LOCATIONS AND BUFFER ZONES
SPRAY FIELD E



G:\ENG\PROJECTS\DS.701 ANSKWRF WASTEWATER\DS.701.105 ANSKWRF 2017 CONSTRUCTION PERMIT\Drawings\CIVIL\DS\SHEETS\ASBUILTS\REF ASBUILTS.dwg, Layout1 (3), 6/14/2019 1:33:52 PM



MONITORING WELLS
MONITORING WELLS - FIELD G

MONITORING WELL	TOP 4" OUTER CASING	TOP 2" INNER CASING	GROUND	STICK UP	NORTH (METERS)	EAST (METERS)
MW-1G TAG #258620	ELEV: 41.88'	ELEV: 41.55'	ELEV: 39.08'	2.80'	87908.08	204453.82
MW-2G TAG #258628	ELEV: 44.70'	ELEV: 44.23'	ELEV: 42.18'	2.52'	86961.64	204305.92
MW-3G TAG #258630	ELEV: 40.82'	ELEV: 40.37'	ELEV: 38.48'	2.34'	87059.37	204894.01
MW-4G TAG #258631	ELEV: 41.72'	ELEV: 41.30'	ELEV: 39.13'	2.59'	87083.99	205047.96
MW-5G TAG #258625	ELEV: 38.11'	ELEV: 37.41'	ELEV: 35.28'	2.83'	87224.43	205871.48
MW-6G TAG #258626	ELEV: 34.70'	ELEV: 34.09'	ELEV: 32.14'	2.56'	87338.98	206580.77
MW-7G TAG #258627	ELEV: 35.64'	ELEV: 35.22'	ELEV: 33.23'	2.41'	87898.99	206585.64
MW-8G TAG #258629	ELEV: 30.94'	ELEV: 30.27'	ELEV: 28.26'	2.68'	88466.82	206507.64
MW-9G TAG #258624	ELEV: 36.15'	ELEV: 35.65'	ELEV: 33.67'	2.48'	87639.24	206170.14

SURFACE WATER SAMPLE LOCATIONS

	NORTH (METERS)	EAST (METERS)
SW-1	88368.84	205871.47
SW-2	88557.43	206493.46

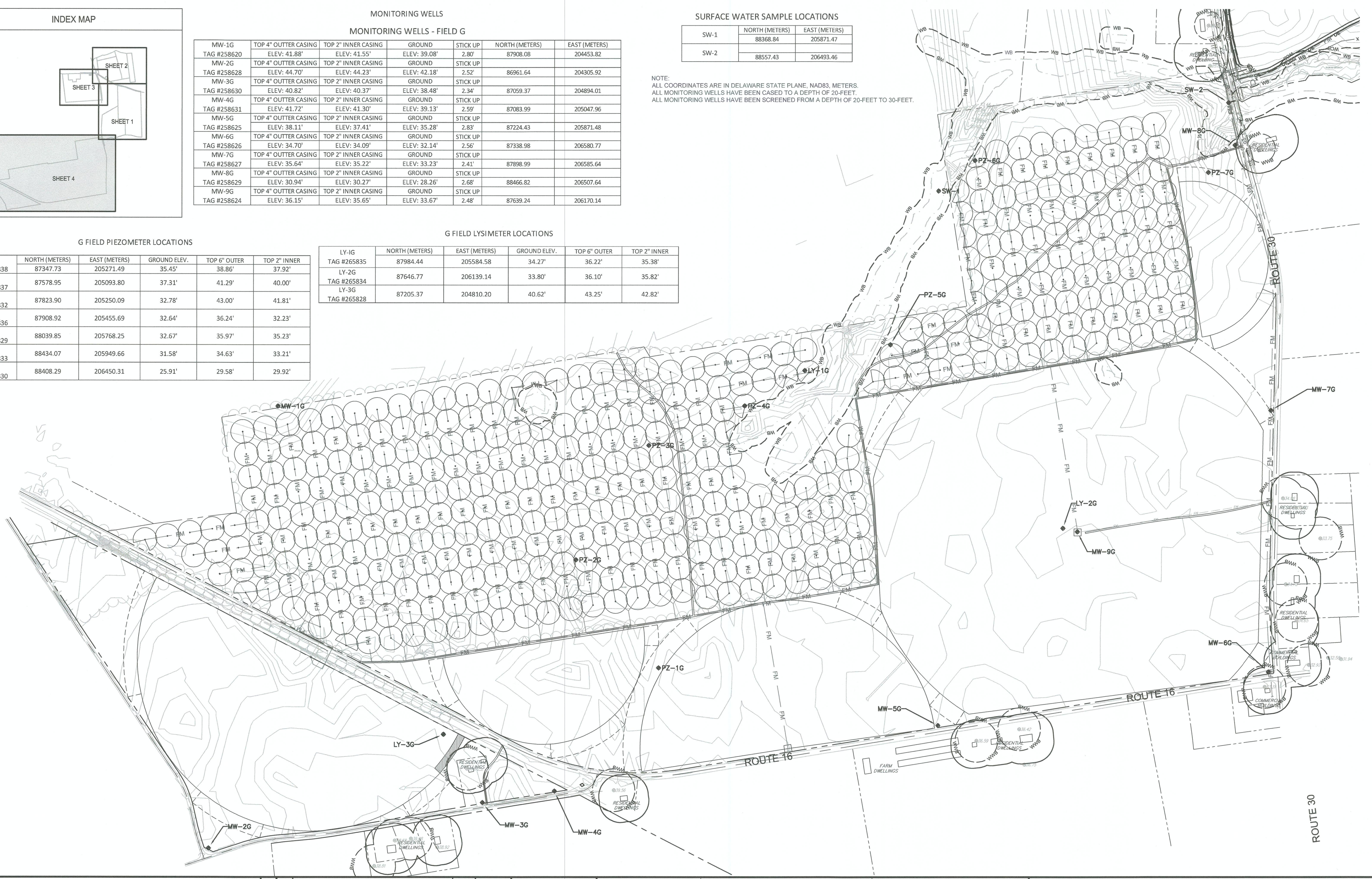
NOTE:
ALL COORDINATES ARE IN DELAWARE STATE PLANE, NAD83, METERS.
ALL MONITORING WELLS HAVE BEEN CASED TO A DEPTH OF 20-FEET.
ALL MONITORING WELLS HAVE BEEN SCREENED FROM A DEPTH OF 20-FEET TO 30-FEET.

G FIELD PIEZOMETER LOCATIONS

PIEZOMETER	NORTH (METERS)	EAST (METERS)	GROUND ELEV.	TOP 6" OUTER	TOP 2" INNER
PZ-1G TAG #265838	87347.73	205271.49	35.45'	38.86'	37.92'
PZ-2G TAG #265837	87578.95	205093.80	37.31'	41.29'	40.00'
PZ-3G TAG #265832	87823.90	205250.09	32.78'	43.00'	41.81'
PZ-4G TAG #265836	87908.92	205455.69	32.64'	36.24'	32.23'
PZ-5G TAG #265829	88039.85	205768.25	32.67'	35.97'	35.23'
PZ-6G TAG #265833	88434.07	205949.66	31.58'	34.63'	33.21'
PZ-7G TAG #265830	88408.29	206450.31	25.91'	29.58'	29.92'

G FIELD LYSIMETER LOCATIONS

LYSIMETER	NORTH (METERS)	EAST (METERS)	GROUND ELEV.	TOP 6" OUTER	TOP 2" INNER
LY-1G TAG #265835	87984.44	205584.58	34.27'	36.22'	35.38'
LY-2G TAG #265834	87646.77	206139.14	33.80'	36.10'	35.82'
LY-3G TAG #265828	87205.37	204810.20	40.62'	43.25'	42.82'



664 Churchmans Road
Newark, Delaware 19702
P.O. Box 15004, Wilmington, Delaware 19850
Phone: (302) 453-6900 Fax: (302) 453-5800

REVISIONS:	DESCRIPTION	BY	DATE

Date: 6/14/19	Checked By: DK	Sheet 4 of 4
Scale: 1"=300'	Page & Grid:	Hundred: BROADKILL
Drawn By: KEG	CAD File: SRRF ASBUILTS.dwg	Budget No. 3003456

SAMPLE LOCATIONS AND BUFFER ZONES
SPRAY FIELD G

SUSSEX COUNTY STATE OF DELAWARE

G:\ENG\PROJECTS\701 ANSKWRF WASTEWATER\DS 701105 ANSKWRF 2017 CONSTRUCTION PERMIT Drawings\CIVIL\3D SHEETS\ASBUILTS.dwg, Layout (4), 6/14/2019 1:25:56 PM